

UNIQUE TO BERWICK

Lean Audit

WE HELP YOU CARE.



**Berwick
Care**

Are your costs under control?

Medical, Care & Hygiene products. Often the second biggest figure on the Profit and Loss, are your costs under control?

Our simple 3 step process to get your Supply Base more lean and functioning at its optimum. Maximising value & minimising waste.



Followed by ongoing performance review.
Implementing a culture of continuous improvement.

Step One: Analysis of current situation using the Supply Base Health Check™ tool



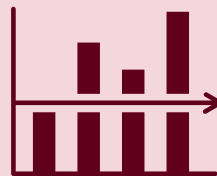
Monetary. Cost analysis, with KPI's compared to with industry standards.



Management. Looking at existing stock and order controls. Plus actual versus targeted results.



Methodology. Overview of staff levels, methods used, and results. Including feedback and relevant third parties.



Includes comparison with national averages.

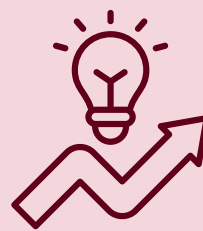
Step Two: Review findings, proposed remedial action



Weaknesses within the
current arrangements.



Strengths of existing
arrangements.



Opportunities ahead
and proposal.

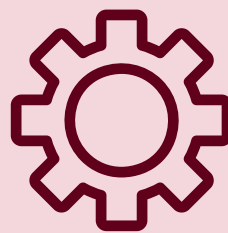
Step Three: Implementation of agreed improvements



Monitor implementation
to ensure compliance



Staff training ahead
of roll-out



As appropriate, **tweak or
adjust** arrangements.

What do you need to do?

Berwick Consultant will need permission to briefly interview key players within appropriate departments.

Berwick Consultant will need access to your current monthly costs. Either from your nominal ledger or can be extracted from copy invoices. Minimum of 3 months data is recommended to ensure reliability of figures.

To calculate the Monthly Costs per Resident, the Berwick Consultant requires your average occupancy over the same length of time. Assistance is available to help you collate this data.

Successful outcome of LEAN Audit is dependent on transparency and openness between both the Beneficiary and the Consultant. Greater transparency and openness results in a more accurate assessment and subsequent remedial action.

Any analysis made or advice given is in good faith and based on the information submitted. It is however essential that you as the recipient/s take final responsibility for any action taken.

To book an introductory meeting, contact us now.

Berwick Care

Contact Us

T: 01743 440011

E: sales@berwickcare.co.uk

W: www.berwickcare.co.uk